

Grand Format Solvent Inkjet Printer

JV5 Series

NEW

JV5-260S / JV5-320S

Mimaki

A High-speed, high quality Mega-sized printer comes out.



JV5-260S / JV5-320S

Unmatched High-Quality Solvent Inkjet Printer of 3,250mm (128")

Only takes one hour to print 42m²(452sq.ft.), furthermore, the resolution is 540 x 1,080dpi.

Maximum resolution of 1,440dpi.

Designed for long-time and continuous printing.



New head arrangement enables high-speed and exceptional image quality.
4 head staggered arrangement

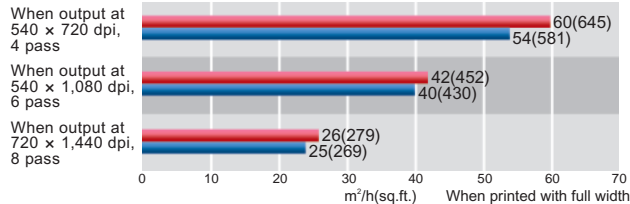
High quality print even for super-sized prints. Grand Format for high quality and fast speed.

New lineup, super-jumbo size of 3,250mm (128") and 2,600mm (102"), for "Exquisitely beautiful, super high-speed performance" JV5 Series. As time-consuming and costly welding is not needed, JV5-260S/320S makes it ideal for both immediate delivery and high-volume production with tarpaulin and flexible face for banners, billboards and other durable graphics. Though grand format machinery, it realizes high resolution print of 540 × 1,080 dpi at 42m² (452sq.ft.) for closer-viewing signage. And print at a distance (540x720dpi) can be made at 60m²/h (645sq.ft./h). Use this overwhelming high quality and production capacity as leverage to make your business accelerate.

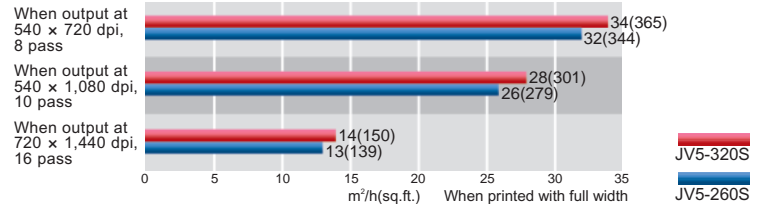


High quality image and printing speed, the pride of the JV5 Series.

【Printing speed with 4 colors】Bi-direction (Variable dots)

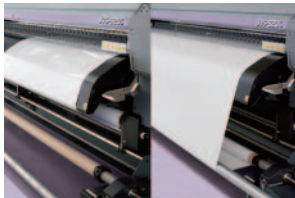


【Printing speed with 6 colors】Bi-direction (Variable dots)

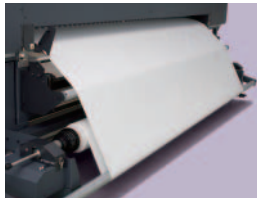


Secure operation with wider media.

Feeding device and take-up device for heavy media.



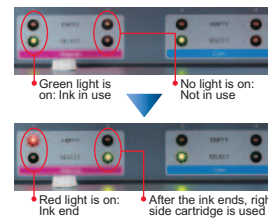
Take-up device



Feeding device

Feeding device and take-up device can securely feed even heavy media with the width of 2,600mm (102.3") or 3,250mm (128"). Heavy media weighing over 100kg (220lbs.) can be fed with constant tension by means of tension bar and winding device.

UISS function supports long-time and continuous printing.



Automatic change of double ink cartridges, which can load up to 1,760cc per color, provides constant print without concern about running out of ink.

Advanced functions of the JV5 Series enhance usability

By mounted large-size Post heater, it enables the media printed at high speed to dry and take up. Media encoder secures stable media feeding without being affected by weight of the media roll. And realizes high quality print. Automatic nozzle drop-out detection saves waste of media and ink. The thickness of media is automatically detected and the head height is automatically adjusted to get to the designed head gap. Even when the thickness of media is changed, the best printing results can be obtained. USB2.0 interface supports high-speed data transfer. A small take-up device which can adjust take-up tension is supplied. Even narrow media can be taken up without using a shaft.

Two types of inks are ready.

【HS ink】

A solvent ink meeting the needs for high scratch resistance and high-speed high-density printing required for outdoor signboard printing.

【ES3 ink】

A safe and low odor solvent ink that can be used even in general offices without special exhausting facilities.

Specification

Items	Specification	
	JV5-260S	JV5-320S
Print Head	On-Demand Piezo Heads (Array of 4 staggered print heads)	
Maximum printing width	2,600 mm (102")	3,250 mm (128")
Printing resolution	540, 720, 1,440 dpi	
Printing mode (Scan × Feed)	720 × 540 dpi; Bi-/Uni-direction 540 × 900 dpi; Bi-/Uni-direction 540 or 720 × 720 dpi; Bi-/Uni-direction 540 or 720 × 1,080 dpi; Bi-/Uni-direction 720 × 1,440 dpi; Bi-/Uni-direction 1,440 × 1,440 dpi; Bi-/Uni-direction	
Ink	Kind	Exclusive solvent ink: either one of ES3 ink or HS ink
	Supply	Automatic change of double ink cartridges
	Capacity	6 color mode: 440 cc cartridge × 2/color, 880 cc/color 4 color mode: 440 cc cartridge × 4/color, 1,760 cc/color
Media specification	Size	Max. width: 2,650 mm (104.3") Max. width: 3,300 mm (129.9") Min. width: 297 mm (11.6") Min. width: 297 mm (11.6")
	Thickness	1.0 mm or below
	Roll weight	100 kg (220.5 lbs) or below 130 kg (286.6 lbs) or below
	Printing surface	Face out/ face in
	Roll diameter	Inside: 3inch / Outside: Less than 250mm (9.8")
Media cutting	Cutting in Y direction by cutter at the head	
Media heater	3 way intelligent heater (PRE/PRINT/POST)	
Media take-up device	Automatic take-up device, Inside/outside selectable 3 inch paper bobbin; Outer diameter 300 mm or less	
Nozzle checking unit (NCU)	Laser system (Class 1 or below)	
Print gap	1.5 mm to 7 mm, step-less & user setting (Automatic detection of media thickness)	
Distance accuracy	Absolute accuracy	± 0.3mm or ± 0.3 % of designated distance, whichever is greater
	Reproducibility	± 0.2mm or ± 0.1 % of designated distance, whichever is greater (with Media designated by us)
Interface	USB2.0	
Power specification	AC 200V to 240V ± 10%, 50/60Hz ± 1Hz, 30A or below	
Power consumption	7,200 VA or below	
Operational environment	Usable temperature: 20 to 35 °C, Humidity: 35 to 60%Rh (No condensing)	
Outer dimension (W) × (D) × (H)	4,750 × 1,610 × 1,640 mm or below 5,170 × 1,610 × 1,640 mm or below	
Weight	1,150 kg (2,535 lbs) or below	1,200 kg (2,646 lbs) or below

RasterLinkPro III, output software with versatile functionality

RasterLinkPro III

High performance software RIP fully brings out the various functions of JV5 Series.

Some of the samples in this catalogue are artificial renderings. Specifications, design and dimensions stated in this catalogue may be subject to change without notice (for technical improvements, etc.) The corporate names and merchandise names written on this catalogue are the trademark or registered trademark of the respective corporations. Inkjet printers print using extremely fine dots, so colors may vary slightly after replacement of the printing heads. Also note that if using multiple printer units, colors could vary slightly from one unit to other unit due to slight individual differences.

MIMAKI ENGINEERING CO., LTD.

TKB Gotenyama Bldg. 5-9-41 Kitashinagawa Shinagawa, Tokyo 141-0001, Japan Tel: +81-3-5420-8671 trading@mimaki.co.jp www.mimaki.co.jp

MIMAKI USA, INC.

140 Satellite Boulevard NE, Suwanee, Georgia 30024-7128 Atlanta +1-888-530-3988 Boston +1-888-530-3986 Los Angeles +1-888-530-3987 Chicago +1-888-530-3985 www.mimakiusa.com

MIMAKI EUROPE B.V.

Joan Muyskenweg 42-44, 1099CK Amsterdam, The Netherlands Tel: +31-20-4627-640 www.mimakieurope.com